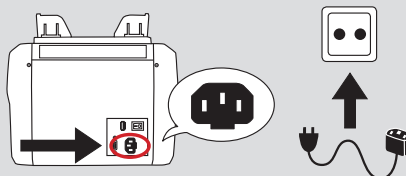
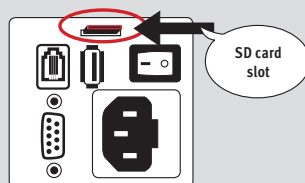


## UPDATE GUIDE FOR rapidcount T 200

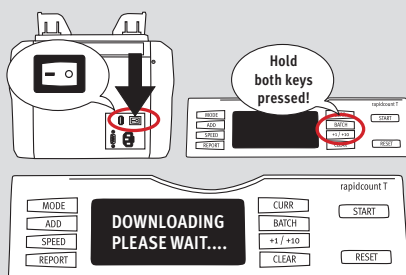
1. Connect the device to the power supply via the mains cable.



2. Insert the **SD card** (with the contacts facing up) into the **SD card slot** on the rear side of the device. Meanwhile please keep the device turned **OFF**.



3. While holding the **BATCH** and the **+1/-10** key pressed, turn **ON** the device. The display will show **DOWNLOADING PLEASE WAIT**. Release the **BATCH** and the **+1/-10** key.



4. The required updates will be installed. During the update process the display will successively show: a. **UPDATE 3D**, b. **UPDATE PANEL**. After the update has finished successfully, the display will show c. **UPDATE DONE**. Please turn **OFF** the device. Press the **SD card** to remove it from the device.

