

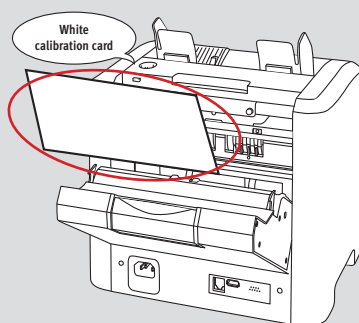
## CALIBRATION INSTRUCTIONS rapidcount X 400

Required calibration cards: 1 x very large white card (included in the scope of delivery)

### Calibration of the CIS sensor:

**1.** Connect the device to the power and switch it on. Press and hold the “CURR” button and select “Setting” from either the touch screen or the menu buttons.

**2.** Now open the housing flap over the opening hook on the upper part of the rear flap. Insert the white calibration card all the way to the back so that the blue light shines on the card (see illustration).



**3.** Now close the housing flap. Select the first item “CIS ADJUST” (arrow in front of 1) and confirm the selection with the CURR key.

**4.** 4 stars appear in the display. Please enter the password **1212** and confirm your entry with the CURR key.

**5.** The calibration is now performed. As soon as “CIS ADJUSTING SUCCESSFUL!” appears in the display, the process has been completed successfully. Please remove the calibration card from the device and switch it off.

