

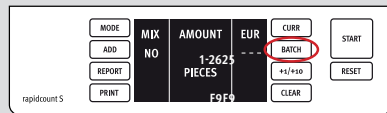
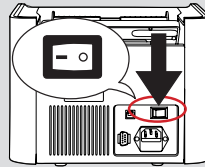
CALIBRATION GUIDE rapidcount S-Serie

REMARK: the calibration manual includes illustrations as examples, the values of the sensors may differ.

Calibration Guide with calibration paper:

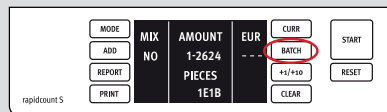
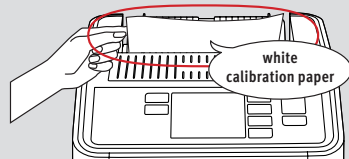
1.

Press the **BATCH** button and keep it pressed as you turn on the device. The device switches to the calibration mode. The following display appears. Release the **BATCH** button.



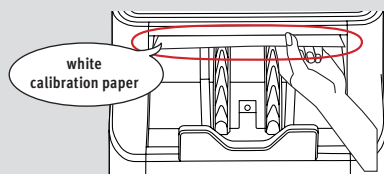
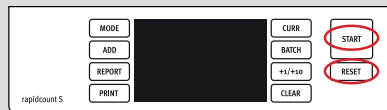
2.

Place the white calibration paper in the banknote feeder or banknote ejector, so that the sensors are completely covered (Illustrations 3). Then press the **BATCH** button. Calibration starts automatically. The calibration mode may take a few seconds. The following display appears.



3.

To finish, press the **RESET** button and then briefly the **START** button. The white calibration paper is ejected immediately from the banknote ejector. The device completes the calibration process. You may turn off the device and start again.

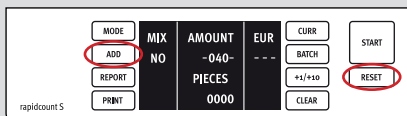


CALIBRATION GUIDE rapidcount S-Serie

Calibration Guide with 100-euro banknote:

1.

Press the **ADD** and **RESET** button and keep them pressed. The following display appears.



2.

Place the **100-euro banknote** in the banknote feeder. The device draws the banknote in; the lower value indicator changes automatically as a result. At the end of the calibration process an optimal value of **144** should be arrived at.

The upper and lower value indicators (marked) depend on each other.

You can change the upper value using the **+1** button (marked in blue), whereby the lower value increases (marked in red) when the **100-euro banknote** is inserted again.

You can increase the upper value using the **+10** button, whereby the lower value is reduced when the **100-euro banknote** is inserted again.

Repeat this process until you have arrived at the optimal lower value indication of **144**.

The calibration process may take a few seconds. To finish, press the **RESET** button and the device terminates the calibration procedure. You may turn off the device and start again.

